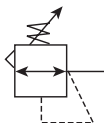


R46 Regulators – Miniature Water

Water service

- Constructed with a combination of N.S.F. and F.D.A. compliant materials
- Lightweight plastic body
- Unbalanced poppet standard
- Non-rising, push-to-lock adjusting knob
- Compact, 3.43 inch (87.1mm) high by 2.06 inch (52.3mm) wide
- Lightweight
- Diaphragm operated
- 1/4", 3/8" ports (NPT)



Port Size	Description	Part Number
1/4"	Non-Relieving, 0-125 Reduced Pressure, Without Gauge	R46-02CK
3/8"	Non-Elieving, 0-125 Reduced Pressure, Without Gauge	R46-03CK

NOTE: 1.250 Dia. (31.8 mm) hole required for panel mounting.

Operating information

Supply pressure (max):	Inlet 150 psig (10.0 bar)
Operating temperature:	40°F to 125°F (4°C to 52°C)
Gauge ports (2):	1/4 inch (can be used for full flow)
Weight:	0.38 lb (0.17 kg)

Ordering Information:

R46

Type
EPDM Elastomers R46

02

Port Size
1/4 inch 02
3/8 inch 03

C

Pressure Range
A 0 to 25 psig (0 to 2 bar)
B 0 to 60 psig (0 to 4 bar)
C 0 to 125 psig (0 to 8 bar)

Relief
K Non-Relieving
P Panel Mount Nut

Most popular.



For inventory, lead times, and kit

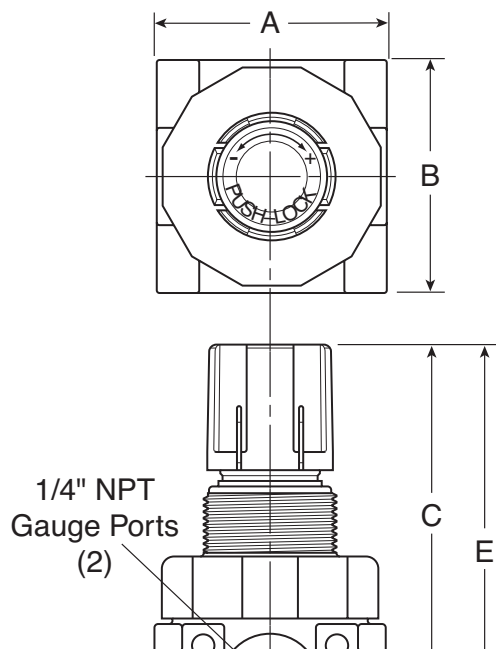
Miniature Water Regulators

Material Specifications

Adjusting screw	Steel
Body	Acetal
Bonnet and seat	Acetal
Diaphragm	EPDM
Seals	EPDM
Springs	Stainless steel
Valve Poppet	EPDM

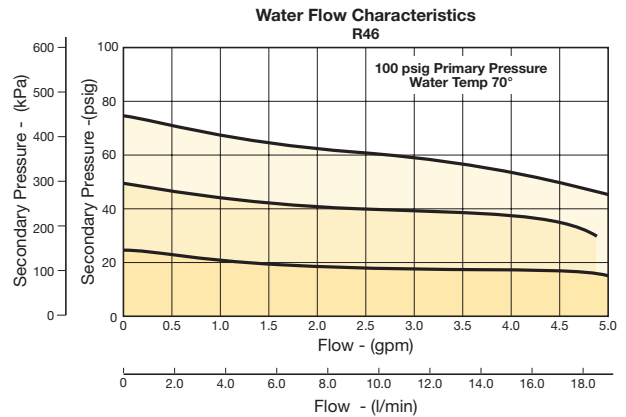
Repair and Service Kits

Panel mount nut, plastic	R05X51-P
Mounting bracket and nut	SA161X57
Relieving	RKR45Y
Non-Relieving	RKR45KY
0-25 psig spring	SPR-46
0-60 psig spring	SPR-47
0-125 psig spring	SPR-48



Regulator Products

Flow Charts



WARNING

**Product rupture can cause serious injury.
Do not connect regulator to bottled gas.
Do not exceed Maximum primary pressure rating.**

CAUTION:

REGULATOR PRESSURE ADJUSTMENT – The working range of knob adjustment is designed to permit outlet pressures within their full range. Pressure adjustment beyond this range is also possible because the knob is not a limiting device. This is a common characteristic of most industrial regulators, and limiting devices may be obtained only by special design. For best performance, regulated pressure should always be set by increasing the pressure up to the desired setting.

General

Dial

Pilot

Proportional

Precision

Water

K

Regulator
Products



For inventory, lead times, and kit

K109

Parker Hannifin Corporation
Pneumatic Division